

FinePix F30's "Underwater" mode captures the full spectrum of those astonishing colors.

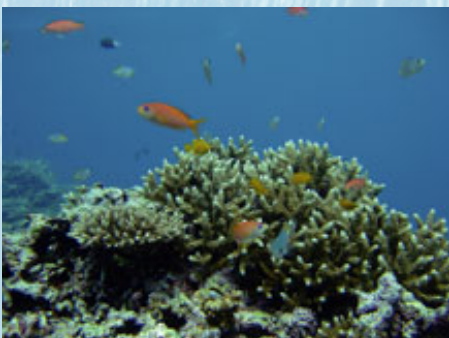


The "Underwater" mode of the FinePix F30 is heads above existing models, creating beautiful images without the blue color-cast that make fish and coral appear "washed out." Fujifilm's camera captures the genuine hues and tints as the naked eye would.

Auto



Underwater Mode



The Auto mode creates a blue color-cast.



Water depth of 20m, ISO200, Cloudy, Scene modes/Auto, No flash

The "Underwater" mode reduces the blue color-cast,



but retains the marine blue of the water.

Water depth 20m, ISO200, Cloudy, Scene modes/Underwater, No flash

The "Underwater" mode with the "Intelligent Flash"...

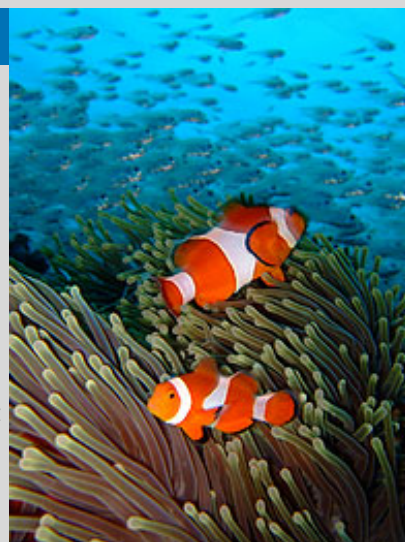


Achieves color as bright and intense as that of reversal film.

Water depth 20m, ISO200, Cloudy, Scene modes/Underwater, With flash

Important points

The conventional "Underwater" mode achieved an overall reduction in the blue color-cast. The new and improved FinePix F30 only affects the fish, coral or other colored objects, leaving the marine-blue background intact. The results are similar to what a reversal film would produce, with the same real-life depth and dimension.



Fact 1

Fact 2

Fact 3

Fact 4

The new "Intelligent Flash"
better captures the richness
of Nature's palette.



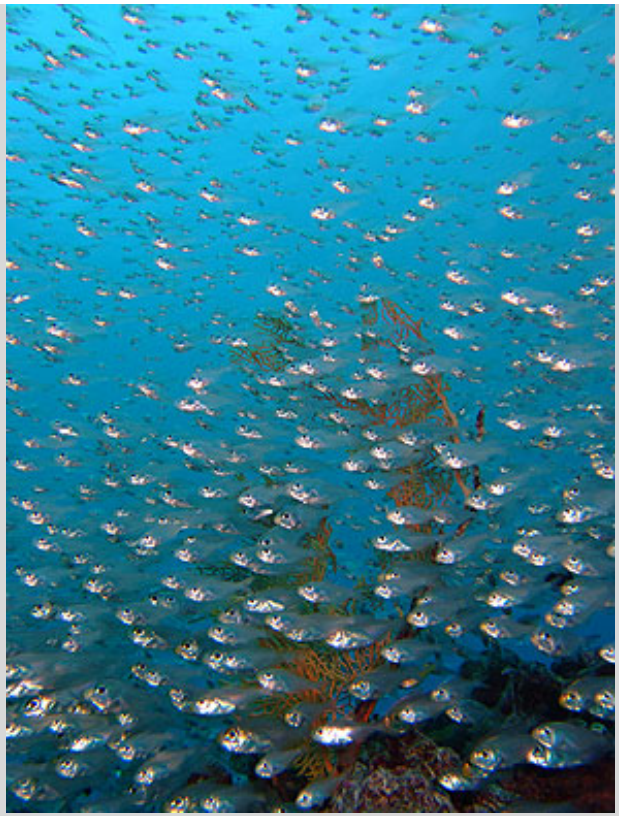
The "Intelligent Flash" automatically
measures the distance to the objects,
then adjusts the flash strength to
the most appropriate setting.
Even a close-up shot of a fish retains
natural color tones.



ISO200, Scene modes/Underwater, With flash



ISO200, Scene modes/Underwater, With flash



ISO200, Scene modes/Underwater, With flash

FinePix F30's high sensitivity ISO 3200 minimizes blur from camera movement.



There's no longer the need to worry about holding the camera at a perfectly stable position.

The FinePix F30's high sensitivity minimizes the inevitable blur, making it easier to take clear underwater pictures.

Low-sensitivity

results in blurred pictures ISO100



High-sensitivity

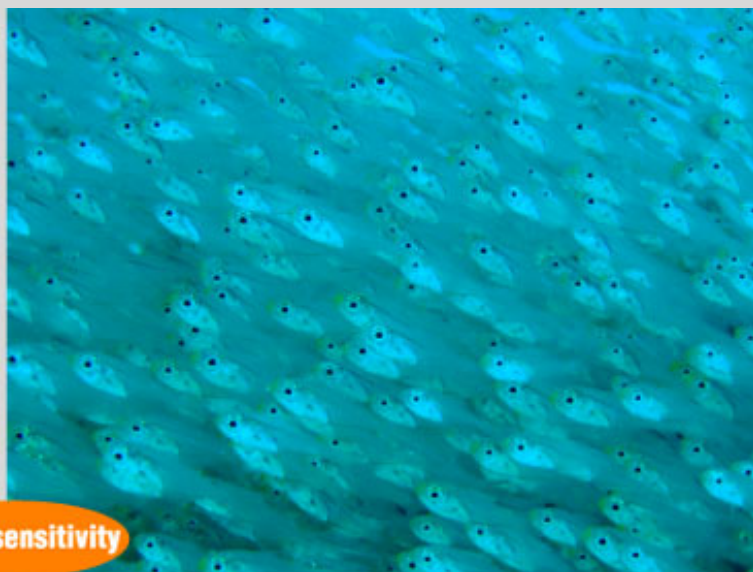
makes for a perfect shot. ISO800

High sensitivity makes it possible to take pictures with no blur.



Low-sensitivity

ISO100, 1/80sec., F8.0, No flash



High-sensitivity

ISO1600, 1/850sec., F8.0, No flash

High sensitivity makes it possible to take clear pictures by flash in the ocean's depths.



Low-sensitivity

ISO200, 1/60sec., F7.1, With flash



High-sensitivity

ISO3200, 1/480sec., F8.0, With flash

Fact 1

Fact 2

Fact 3

Fact 4

FinePix F30 comes packed with features to satisfy all diver's needs.



Other characteristics of Fujifilm's FinePix F30.

ISO3200+6.3 mega pixels

Intelligent flash captures subjects and background beautifully

2.5 inch, high-resolution LCD

Approx, 580 shots per charge

The waterproof protector is made exclusively for the FinePix F30 "WP-FXF30."

Opens and closes easily with a dial-type lock. So easy to open and close that women divers needn't worry about chipping their nails.

The flash diffuser can be mounted with one touch and improves the quality of macro shots.

The clean, compact design fits into a BC pocket.



Specifications for the waterproof protector

Acceptable water depth / up to depths of 40m

Material / body: clear polycarbonate Lens window: tempered glass

Dimensions / width 129mm x height 93mm x depth 96mm (includes lens protrusion)

Weight / approx. 295g (without camera or attachment)

LCD monitor used for shooting.

