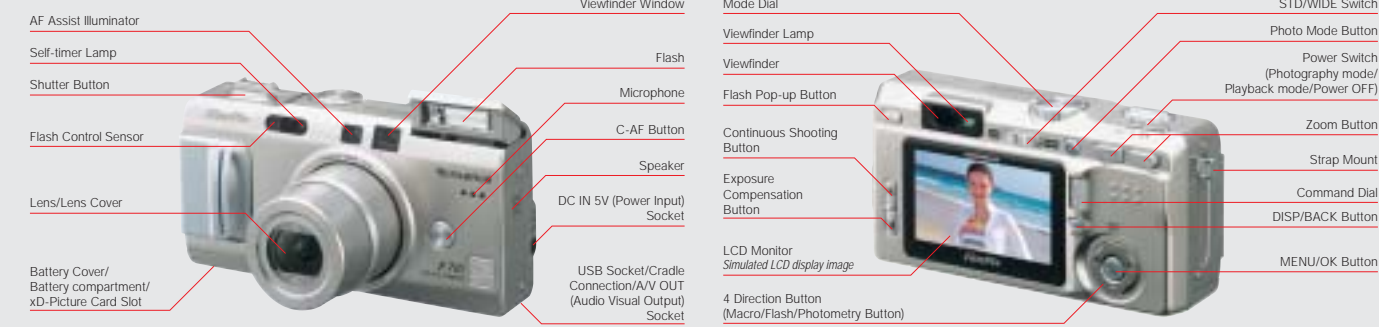


## FUNCTIONS



## SPECIFICATIONS

### DIGITAL CAMERA FinePix F710

Number of effective pixels\* 6.2 million (S-pixel: 3.1 million, R-pixel: 3.1 million) pixels

**CCD sensor** 1/1.7-inch Super CCD SR  
[Number of total pixels: 6.7 million (S-pixel: 3.35 million, R-pixel: 3.35 million) pixels]

**Number of recorded pixels** Still image:  
• Standard mode: 2832x2128 (6.03 million)/2048x1536/1600x1200/1280x960 pixels  
• Wide mode: 2816x1584 (4.46 million)/2304x1296/2048x1152/1536x864 pixels  
Movie:  
• Standard mode: 640x480/320x240 pixels (30 frames/sec., with monaural sound)  
• Wide mode: 640x360/320x184 pixels (30 frames/sec., with monaural sound)

**Storage media** xD-Picture Card™ (16MB to 512MB)

**File format** Still image: CCD-RAW/JPEG (Exif. Ver 2.2)\*\*  
Movie: AVI (Motion JPEG), WAV  
[Design rule for Camera File system compliant/DPOF-compatible]

**Number of images/recording time**

Mode/Quality	Standard (4:3 Format)					Wide (16:9 Format)					
	CCD-RAW	4M Fine	4M Normal	3M	2M	1M	4M Fine	4M Normal	3M	2M	1M
Number of recorded pixels	2832 x 2128	2832 x 2128	2832 x 2128	2048 x 1536	1600 x 1200	1280 x 960	2816 x 1584	2816 x 1584	2304 x 1296	2048 x 1152	1536 x 864
DPC-16 (16MB)	1	5	10	19	25	33	6	14	20	22	30
DPC-32 (32MB)	2	10	21	40	50	68	14	28	41	44	61
DPC-64 (64MB)	4	21	42	81	101	137	28	57	84	90	124
DPC-128 (128MB)	9	42	85	162	204	275	58	115	169	181	249
DPC-256 (256MB)	19	86	171	325	409	550	116	231	339	362	499
DPC-512 (512MB)	39	172	343	651	818	1101	232	462	679	725	998

Mode/Quality	Standard (4:3 Format)		Wide (16:9 Format)	
	640 x 480	320 x 240	640 x 360	320 x 184
DPC-16 (16MB)	Approx. 13 sec.	Approx. 26 sec.	Approx. 18 sec.	Approx. 34 sec.
DPC-32 (32MB)	Approx. 27 sec.	Approx. 54 sec.	Approx. 36 sec.	Approx. 70 sec.
DPC-64 (64MB)	Approx. 55 sec.	Approx. 109 sec.	Approx. 73 sec.	Approx. 141 sec.
DPC-128 (128MB)	Approx. 111 sec.	Approx. 219 sec.	Approx. 147 sec.	Approx. 283 sec.
DPC-256 (256MB)	Approx. 223 sec.	Approx. 7.3 min.	Approx. 296 sec.	Approx. 9.4 min.
DPC-512 (512MB)	Approx. 7.4 min.	Approx. 14.6 min.	Approx. 9.8 min.	Approx. 18.9 min.

The number of images and recording time will vary slightly depending on the type of subject.

<b>Lens</b>	Fujinon 4X optical zoom lens, F 2.8 – F5.6
<b>Lens focal length</b>	Equivalent to 32.5 – 130 mm (STD)/35.5 – 142 mm (WIDE) on a 35 mm camera
<b>Focus</b>	Auto focus (Area, Multi, Center)/Manual Focus AF assist illuminator incorporated
<b>Focus distance</b>	Normal: 60cm/2.0 ft. to infinity Macro: Approx. 7.5 cm – 80 cm / 3.0 in. – 2.6 ft.
<b>Shutter speed</b>	3 sec. – 1/2000 sec. depend on the shooting mode
<b>Aperture</b>	F2.8 – F8 (1/3EV step) at Wide-angle, F5.6 – F11 (1/3EV step) at Telephoto
<b>Sensitivity</b>	Auto: Equivalent to ISO 160 - 800 Manual: Equivalent to ISO 200/400/800/1600 (Resolution fixed at 1M for shots taken at ISO1600)
<b>Exposure control</b>	64-zone TTL metering-multi, spot, average
<b>Exposure modes</b>	Programmed AE, Aperture Priority AE, Shutter Priority AE, Manual
<b>White balance</b>	Automatic Manual [Fine, Shade, Fluorescent light (Daylight), Fluorescent light (Warm White), Fluorescent light (Cool White), Incandescent light], Custom
<b>Viewfinder</b>	Real-image optical viewfinder, approx. 77% coverage
<b>LCD monitor</b>	2.1-inch Widescreen CG silicon TFT (173,000 pixels) approx. 100% coverage
<b>Flash</b>	Auto flash using flash control sensor Effective range: Wide angle (0.3 m – 5.5 m/1.0 ft – 18.0 ft) Telephoto (0.6 m – 4.0 m/2.0 ft – 13.1 ft) Flash mode: Auto, Red-eye Reduction, Forced Flash, Suppressed Flash, Slow Synchro, Red-eye Reduction + Slow Synchro
<b>Self-timer</b>	Approx. 2 or 10 sec. delay
<b>Video output</b>	NTSC/PAL selectable
<b>Digital interface</b>	USB 2.0 (High speed)
<b>Terminal</b>	Multiple Connector (for included USB & AV cable, Cradle), Power input socket
<b>Power source</b>	NP 40 battery (710mAh, included) or AC Power adapter (included)
<b>Dimensions</b>	109.5 (W) x 54.0 (H) x 29.0 (D) mm/4.3(W) x 2.1(H) x 1.1(D) in.
<b>Weight</b>	210g/7.4oz. (excluding batteries and media)

### Camera functions

#### Digital Zoom ratio at Shooting/Playback mode

Mode	Standard (4:3 Format)				Wide (16:9 Format)			
	2832 x 2128	2048 x 1536	1600 x 1200	1280 x 960	2816 x 1584	2304 x 1296	2048 x 1152	1536 x 864
Shooting	–	1.4	1.8	2.2	–	1.2	1.4	1.8
Playback	21.0	15.2	11.9	9.5	15.6	12.8	11.4	8.5

**AF assist illuminator** Effective range: Up to approx. 2.5m (wide angle) depend on subject  
**Shooting modes** Normal: Auto, Scene Position (Portrait, Landscape, Sports, Night Scene)  
Continuous: 1. Top-5 (max. 5 frames/sec., up to 5 frames)  
2. Final-5 (max. 5 frames/sec., up to 5 frames)  
3. Long-period [max. 1.6 frames/sec., up to 40 frames.  
Only at 1M mode (1280 x 960/1536 x 864 pixels)]

**Color modes** STANDARD/CHROME/B&W  
**Voice Memo** Up to 30 sec. WAV format  
**Playback** Single frame (with max. 21X Playback zoom), 12 Multi-frame, Displayed by day sorting

**Accessories included** 16 MB xD-Picture Card™, Li-ion battery NP40, AC Power Adapter AC-5VW, Hand strap, USB cable, A/V cable, PictureCradle, CD-ROM (• USB driver • FinePix Viewer • ImageMixer VCD2 for FinePix • RAW File Converter LE)

\* Number of effective pixels: The number of pixels on the image sensor which receive input light through the optical lens, and which are effectively reflected in the final output data of the still image.  
\*\* Exif 2.2 is a newly revised digital camera file format that contains a variety of shooting information for optimal printing.



Specifications are subject to change without notice.

## OPTIONAL ACCESSORIES

	<b>xD-Picture Card™</b> DPC-16 (16MB) DPC-32 (32MB) DPC-64 (64MB) DPC-128 (128MB) DPC-256 (256MB) DPC-512 (512MB)		<b>Rechargeable Lithium-ion Battery</b> NP-40
	<b>Battery Charger</b> BC-65 • Charges in approx. 90 minutes, • The NP-40 battery adapter is included.		<b>PC Card Adapter</b> DPC-AD
	<b>Image Memory Card Reader</b> DPC-R1 (USB)		<b>Soft Case</b> SC-FX701
	<b>xD-Picture Card™ USB Drive</b> DPC-UD1		<b>Waterproof Case</b> WP-FX701

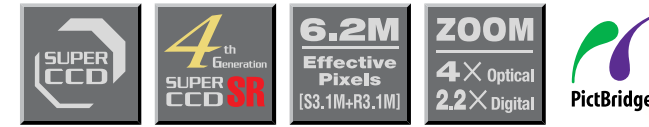
Microsoft, Windows, and Windows logo are trademarks, or registered trademarks of Microsoft Corporation in the United States and/or other countries. Macintosh and Mac OS are trademarks of Apple Computer, Inc., registered in the U.S. and other countries. All other trademarks are the property of their respective holders.

For more information on the full range of Fujifilm digital products, please visit our Website: <http://home.fujifilm.com>

**FUJIFILM**  
I&I – Imaging & Information

**digital**  
Tools for the imagination.

## DIGITAL CAMERA FinePix F710



**NEW**

WIDEN YOUR POSSIBILITIES:  
WIDE DYNAMIC RANGE AND WIDESCREEN DISPLAY™

# FinePix

**FUJIFILM**  
FUJI PHOTO FILM CO., LTD.

26-30, NISHIAZABU 2-CHOME, MINATO-KU, TOKYO 106-8620, JAPAN

Ref. No. EB-320E (SK-04-03-F1120-F9711) Printed in Japan © 2004 Fuji Photo Film Co., Ltd.

# WIDE DYNAMIC RANGE

ADD A NEW DIMENSION TO YOUR PHOTOS WITH SUPER CCD SR



JPEG mode, 2832 x 2128 pixels, 1/500 sec, f/8.0, ISO 200 equivalent



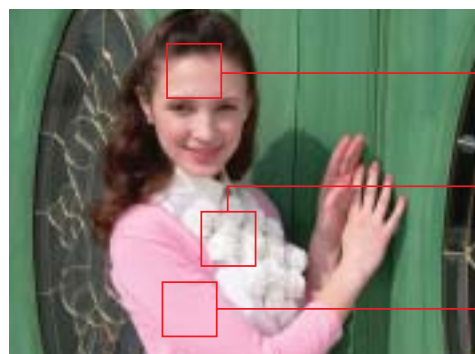
*Super CCD SR captures precious moments with sharp precision and makes it possible to reproduce accurate color brightness without blowing out the whites.*

## THE 4TH-GENERATION SUPER CCD SR

The 4th-Generation Super CCD SR features 6.2 million effective pixels (3.1 million S-pixels and 3.1 million R-pixels). The maximum image size is a high-resolution of 2832 x 2128 (6.03 million) recording pixels. The Super CCD SR mimics the structure of negative film by using a combination of low-sensitivity R-pixels and high-sensitivity S-pixels, with an extremely precise design and construction for each pixel. This means a significantly greater tonal range – the ability to capture three-dimensional realism within a fine range of highlight tonality as well as superlative shadow detail and texture. The next-generation sensor also promises improved resolution, greater sensitivity, higher signal-to-noise ratio and enhanced color reproduction.



Super CCD SR



More natural-looking skin tones with increased dynamic range.

Through the expanded dynamic range, you can not only capture the fine highlights but also accurately maintain balanced whites even under bright light.

Enhanced photo quality and precise details of materials offering a richer color tonality.

## THE FINEPIX F710 CAPTURES YOUR POSSIBILITIES OF EXPRESSION, INFINITELY.

Super CCD SR reproduces even the finest highlights and shadow details giving a rich tonality.

The 2.1-inch widescreen LCD monitor shows visibly sharper images.

Now you can create your own photo brilliance as you have never experienced before.



DIGITAL CAMERA  
*FinePix* F710

# WIDESCREEN DISPLAY

## BROADEN YOUR VIEW WITH MORE IMPACT IN ONE SCREEN



JPEG mode, 2816 x 1584 pixels, 1/500 sec, f/8.0, ISO 200 equivalent



Actual size

### 2.1-INCH WIDESCREEN LCD

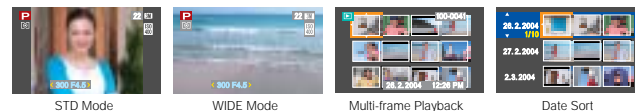
The FinePix F710 features the next-generation 2.1-inch, 173,000 pixel CG silicon TFT widescreen LCD monitor for crystal-clear, glare-free images.

### STD IMAGE (4:3) / WIDE IMAGE (16:9) SELECTABLE



When taking a photo, FinePix F710 allows you to choose between two modes, the standard mode and the wide mode, with varying aspect ratios of 4:3 and 16:9 respectively. You can effortlessly playback your images taken in both modes on the widescreen LCD. Photos taken in wide mode can also be fully displayed on a wide TV monitor.

### EASY-TO-USE GUI ON WIDESCREEN LCD



The Widescreen LCD on the FinePix F710 displays a variety of sophisticated GUI functions for improved success in taking great photos. In standard mode, photo info is clearly displayed in the vertical menu bar on either side of the screen so as not to interfere with your photos' composition. This feature makes taking your photos fast and easy. In wide mode, photos can be fully displayed on the entire screen. Using the Multi-frame Playback function, you can efficiently recall stored data and view 12 frames at a time. To quickly retrieve an image from memory, simply use the Date Sort function.

### WIDE ANGLE - 4X OPTICAL ZOOM



The FinePix F710 features a fast and responsive f/2.8 Fujinon 4X optical zoom lens that is equivalent to 32.5 mm - 130 mm\* on a 35 mm camera, achieving brilliant pictorial results from wide angle to telephoto. Combined with an excellent smooth digital zoom, up to 2.2X (in 1280 x 960-pixel mode), the zoom can magnify images up to 8.8X. The new chip offers faster start-up and shooting interval times. In fact, the camera is ready to shoot approximately 1.2 seconds after activating the switch. \* at STD mode

### VERSATILE EXPOSURE OPTIONS

The FinePix F710 boasts 10 different exposure options for various photo scenes. The ten options are easily accessible on the mode dial, which can be quickly turned by 360° degrees. The FinePix F710 also offers three light metering selections: 64-TTL Multi, Spot and Average. To correct exposure levels, you can easily select the exposure compensation button to change exposure from -2 to +2 EV in 1/3 EV increments. The aperture can also be adjusted up to 10 levels (F2.8 - F8).

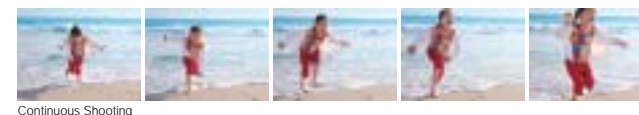
- |                                 |             |
|---------------------------------|-------------|
| <b>AUTO</b> Auto Mode           | Night scene |
| <b>P</b> Program Auto           | Sports      |
| <b>S</b> Shutter-Priority Auto  | Landscape   |
| <b>A</b> Aperture-Priority Auto | Portrait    |
| <b>M</b> Manual Mode            | Movie       |



Aperture-Priority Auto

### VARIOUS SHOOTING FEATURES

- Slow Synchro Shooting (Sf)**  
 By combining an emitting stroboscope with a slow shutter speed, portrait and landscape photos can be captured at the same time.
- Macro Shooting (M)**  
 Once set to macro shooting mode, short-range shooting is possible at a distance of approximately 7.5 cm to 80 cm respectively.
- Movie Recording (M)**  
 The FinePix F710 records and playbacks VGA-sized movies of 30 full frames/sec. with sound. The maximum length of recording is approximately 880\* seconds at (320 x 240 pixels) and 450\* seconds at (640 x 480 pixels). Smooth and highly detailed video clips can be captured and recorded in the Motion JPEG (AVI) format, for maximum ease when exporting them to a PC. \* Using xD-Picture Card™ 512MB
- Continuous Shooting (C)**  
 Lets you choose three continuous shooting modes: Top 5-frame Continuous Shooting (max. 5 frames/sec when shutter button is pressed). Final 5-frame Continuous Shooting (max. 5 frames/sec just before the shutter button is released). Long-period Continuous Shooting; this mode is available only in auto programmed mode and set to 1280 x 960 pixels (STD)/1536 x 864 pixels (WIDE), but allows you to capture up to 40 frames at max 1.6 frames/sec.
- Auto Exposure Bracketting**  
 This function automatically captures 3 consecutive exposures in 1/3, 2/3 or 1EV increments over and under the set exposure, assuring a perfect exposure level.



### HIGH-PERFORMANCE AUTO FOCUS FUNCTION

The FinePix F710 provides highly developed AF functions. Simply depress the continuous-auto focus button (C-AF) to hold a moving subject in accurate focus. Even in low light conditions, the AF assist illuminator is automatically set to obtain an accurate focus. The camera also lets you focus on specific areas in the viewfinder using the AF Area Focus function, without having to lock and recompose the shot. Whichever the mode, the auto focus system of the FinePix F710 enables focusing that is quicker and more accurate in any situation.

(Area AF) Simulated image

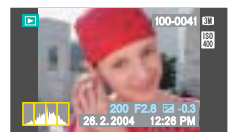
### EASY-TO-USE FEATURES

The FinePix F710 is ergonomically designed to be easier to hold and use. The lens is positioned in the center of the camera so that you can comfortably hold the camera using both hands. You can use the Command Dial to easily change useful settings e.g., Program-Shift, Shutter-Speed and Aperture. You can also easily search and playback your images stored in memory.



### HISTOGRAM DISPLAY

You may view the histogram of any captured image on the LCD monitor. This feature is ideal for the confirmation of exposure on-the-spot.



### FINEPIX PHOTO MODE

The photo mode button gives you control over all image quality parameters, including greater pixels, sensitivity (auto or manual: ISO equivalent 200 - 1600) and color (standard, chrome and B&W). The DPOF (Display Printing Order Format) function is also available in one touch. All these settings are controlled by one button (F button), giving you more enjoyment in creating pictures easily.



### EASY CONNECTION TO YOUR PC

The PictureCradle and FinePix Viewer software that come with your FinePix F710 make it a snap to download image files, movie clips and audio files to your PC for viewing, monitoring or editing. In addition, the FinePix F710 can be connected to display images on your TV. The PictureCradle doubles as a charger for internal rechargeable batteries with high-speed USB 2.0 digital interface support.



With included PictureCradle

### DIRECT PRINTING WITHOUT PC

The FinePix F710 is compatible with the PictBridge standard. PictBridge is a direct printing function that allows you to print your digital photos taken on your digital camera directly to your printer. Direct Printing is only available for PictBridge compatible printers.



When printing in 16:9 format, refer to your printer manual.

### OTHER FEATURES

- CCD-RAW FILE FORMAT
- ULTRA-SOPHISTICATED AUTO WHITE BALANCE
- MULTI-LANGUAGES LCD MONITOR (SUPPORTS SIX LANGUAGES)
- TIME DIFFERENCE SETTING
- CONVENIENT VOICE MEMO